

CRIMESTOPPER



SUMMER 2020 PRODUCT CATALOG

SECURITY SAFETY COMMERCIAL ACCESSORIES

1 WHY Remotes will only send commands to the system

2 WHY Remotes send commands and receive confirmations from the system

OEM Utilizes the OEM remote to activate the system by pressing the lock button 3 times

RF KITS Add-on remote kit provides extended range for OEM controlled systems



NEW DELUXE G6 SERIES

GOING STRONG G5 SERIES



[ACTUAL SIZE]



[ACTUAL SIZE]

REMOTE START

CrimeStopper, the leader in 12 volt convenience products, offers a full array of remote starts, alarms and remote start units with built-in alarms. With today's vehicles being more complicated to integrate into, we carry a full lineup of the latest integration modules to allow a seamless installation of all of our convenience systems.

NEW G6 SERIES



REMOTE START/KEYLESS ENTRY

MODEL: **RS4-G6**



FEATURES

- (2) 1-way 4 button remotes
- Up to 1500 ft of range
- Keyless entry
- Trunk release
- Gas, diesel and hybrid compatible
- Manual or automatic transmission compatible
- High & low temperature auto start
- Upgradeable to alarm - Just add a sensor!
- 2 independent data ports
- Each data port supports iDatalink & DBI protocols
- Linkr Smartphone Control Compatible



REMOTE START/KEYLESS ENTRY

MODEL: **RS1-G6**



FEATURES

- (2) 1 button remotes
- Up to 1500 ft of range
- Keyless entry
- Gas, diesel and hybrid compatible
- Manual or automatic transmission compatible
- High & low temperature auto start
- Upgradeable to alarm - Just add a sensor!
- 2 independent data ports
- Each data port supports iDatalink & DBI protocols
- Linkr Smartphone Control Compatible

G5 SERIES



REMOTE START/KEYLESS ENTRY

MODEL: **RS7-G5**



FEATURES

- (1) 2-way LCD paging 5 button rechargeable remote
- (1) Companion non-paging 5 button remote
- Up to 3000 ft of range
- Keyless entry
- Trunk release
- Multi-vehicle control
- Gas, diesel and hybrid compatible
- Manual or automatic transmission compatible



REMOTE START/KEYLESS ENTRY

MODEL: **RS4-G5**



FEATURES

- (2) 5 button remotes
- Up to 2000 ft of range
- Keyless entry
- Remote trunk release
- Multi-vehicle control
- Gas, diesel and hybrid compatible
- Manual or automatic transmission compatible

SECURITY
REMOTE START/KEYLESS ENTRY



REMOTE START/KEYLESS ENTRY

MODEL: **RS3-G5**

FEATURES

- (2) 4 button remotes
- Up to 1500 ft of range
- Keyless entry
- Multi-vehicle control
- Gas, diesel and hybrid compatible
- Manual or automatic transmission compatible



REMOTE START/KEYLESS ENTRY

MODEL: **RS1-G5**

FEATURES

- (2) 1 button remotes
- Up to 1500 ft of range
- Keyless entry (unlock only after starting remotely)
- Gas, diesel and hybrid compatible
- Manual or automatic transmission compatible



ADD-ON REMOTE START FOR USE WITH OEM KEYLESS ENTRY SYSTEMS

MODEL: **RS00-G5**

FEATURES

- Utilizes OEM remote
- No extra remotes to carry
- Press LOCK button 3 times to start vehicle
- Gas, diesel and hybrid compatible
- Manual or automatic transmission compatible



SECURITY/REMOTE START/KEYLESS ENTRY

MODEL: **SP-502**

FEATURES

- (1) 2-way LCD paging 5 button rechargeable remote
- (1) Companion non-paging 5 button remote
- Up to 3000 ft of range
- Keyless entry/Arm/disarm
- Trunk release
- Dual stage shock sensor
- 120dB siren
- Multi-vehicle control
- Manual transmission compatible



MODEL: **SP-302**

FEATURES

- Same as **SP-502** but without remote start capabilities.



STANDARD SECURITY/KEYLESS ENTRY

MODEL: **SP-102**

FEATURES

- (2) 4 button remotes
- Up to 500 ft of range
- Keyless entry
- Trunk release
- Arm/disarm
- Dual stage shock sensor
- 120dB siren



SECURITY/REMOTE START/KEYLESS ENTRY

MODEL: **SP-402**

FEATURES

- (2) 5 button remotes
- Up to 1500 ft of range
- Keyless entry/Arm/disarm
- Trunk release
- Dual stage shock sensor
- 120dB siren
- Multi-vehicle control
- Manual transmission compatible



DELUXE SECURITY/KEYLESS ENTRY

MODEL: **SP-202**

FEATURES

- (2) 5 button remotes
- Up to 700 ft of range
- Keyless entry
- Trunk release
- Arm/disarm
- Dual stage shock sensor
- 120dB siren
- Multi-vehicle control



ADD-ON REMOTE START

SECURITY
REMOTE START/SECURITY SYSTEMS

SECURITY/KEYLESS ENTRY

SECURITY
OMEGALINK RF KITS

SECURITY
CRIMESTOPPER RF KITS

NOTE: THE OL-RF-KITS BELOW ARE DESIGNED TO WORK WITH OFA, IDATALINK, OMEGALINK, AND FORTIN EVO-ONE.



OmegaLink
DELUXE 2-WAY/5-BUTTON RF KIT

MODEL: **OL-RF-52-SST**



FEATURES

- Up to 3000 ft of range
- Keyless Entry w/ trunk release
- One 5-Button 2-Way LCD Remote
- One 5-Button 1-Way Remote
- 2-Way Antenna - flashable firmware on OmegaWeblink.com



OmegaLink
DELUXE 2-WAY/5-BUTTON RF KIT

MODEL: **OL-RF-42-SST**



FEATURES

- Up to 3000 ft of range
- Keyless Entry w/ trunk release
- One 5-Button 2-Way LED Remote
- One 5-Button 1-Way Remote
- 2-Way Antenna - flashable firmware on OmegaLink.com



OmegaLink
DELUXE 2-WAY/1-BUTTON RF KIT

MODEL: **OL-RF-15-SST**



FEATURES

- Up to 3000 ft of range
- Keyless Entry
- One 1-Button 2-Way LED Remote
- One 1-Button 1-Way Remote
- 2-Way Antenna - flashable firmware on OmegaWeblink.com



OmegaLink
DELUXE 1-WAY/5-BUTTON RF KIT

MODEL: **OL-RF-32-SST**



FEATURES

- Up to 3000 ft of range
- Keyless Entry w/ trunk release
- Two 5-Button 1-Way Remotes
- 1-Way Antenna - flashable firmware on OmegaWeblink.com



OmegaLink
DELUXE 2-WAY/1-BUTTON RF KIT

MODEL: **OL-RF-12-SST**



FEATURES

- Up to 3000 ft of range
- Keyless Entry
- Two 1-Button 1-Way Remotes
- 1-Way Antenna - flashable firmware on OmegaWeblink.com

THESE RF-KITS ARE DESIGNED TO WORK WITH OFA, IDATALINK, OMEGALINK, AND FORTIN INTERFACES.



RF KIT

MODEL: **REV04.1**



FEATURES

- (2) 5 button remotes
- Up to 1500 ft of range
- Keyless entry
- Trunk release
- Multi-vehicle control
- Designed to work exclusively with OFA, Omegalink, and Fortin integration products
- Vehicle dependent firmware required



RF-KIT

MODEL: **REV01.1**



FEATURES

- (2) 1 button remotes
- Up to 1500 ft of range
- Designed to work exclusively with OFA, Omegalink, and Fortin integration products
- Vehicle dependent firmware required

THESE RF-KITS ARE DESIGNED TO WORK EXCLUSIVELY WITH FORTIN INTERFACES.



F FORTIN
RF KIT

MODEL: **RFALL642W**



FEATURES

- (1) 2-Way 4 button remote
- (1) companion non-paging 4 button remote
- Up to 3500 ft of range
- Keyless entry
- Trunk release
- Designed to work exclusively with Fortin integration products
- Vehicle dependent firmware required



F FORTIN
RF KIT

MODEL: **RFALL641W**



FEATURES

- (2) 4 button remotes
- Up to 3500 ft of range
- Keyless entry
- Trunk release
- Designed to work exclusively with Fortin integration products
- Vehicle dependent firmware required

FORTIN RF KITS

SECURITY
FORTIN RF-KITS

SECURITY
SMARTPHONE CONTROL

ACCESSORIES

THESE RF-KITS ARE DESIGNED TO WORK EXCLUSIVELY WITH FORTIN INTERFACES.

NEW!



433MHz

F FORTIN®
1-WAY/1-BUTTON RF KIT

MODEL: **RFK-411**

1 WHY

FEATURES

- Up to 2000 ft of range (LORA-SST 433MHz)
- Controls start, stop, lock and unlock functions
- CE, IC and FCC certified devices.
- Works with EVO-ONE and EVO-ALL
- Fast and easy installation

NEW!



433MHz

F FORTIN®
1-WAY/4-BUTTON RF KIT

MODEL: **RFK-441**

1 WHY

FEATURES

- Up to 2000 ft of range (LORA-SST 433MHz)
- Controls start, stop, lock and unlock functions and much more
- CE, IC and FCC certified devices
- Works with EVO-ONE and EVO-ALL
- Fast and easy installation

NEW!



433MHz

F FORTIN®
2-WAY/4-BUTTON RF KIT

MODEL: **RFK-442**

2 WHY

FEATURES

- Up to 2000 ft of range (LORA-SST 433MHz)
- Controls start, stop, lock and unlock functions and much more
- CE, IC and FCC certified devices
- Works with EVO-ONE and EVO-ALL
- Fast and easy installation

NEW!



900MHz

F FORTIN®
1-WAY/1-BUTTON RF KIT

MODEL: **RFK-912**

1 WHY

FEATURES

- Up to 6000 ft of range (LORA-SST 900MHz)
- Anti-Code Grabbing Technology
- Eco-Connect long battery Life technology
- LoRa® Spread Spectrum Technology (900 MHz)
- CE, IC and FCC certified devices
- Fast and easy installation
- Compatible with EVO-ONE and EVO-ALL

NEW!



900MHz

F FORTIN®
2-WAY/4-BUTTON RF KIT

MODEL: **RFK-942**

2 WHY

FEATURES

- Up to 6000 ft of range (LORA-SST 900MHz)
- Anti-Code Grabbing Technology
- Eco-Connect long battery life technology
- LoRa® Spread Spectrum Technology (900 MHz)
- CE, IC and FCC certified devices
- Fast and easy installation
- Compatible with EVO-ONE and EVO-ALL

4G



powered by **Linkr MOBILE LT**
GET THE LINKR-LT APP WITH YOUR SHOP LOGO!

SMART PHONE CONTROL APP

MODEL: **LINKR-LT2**

FEATURES

- Plugs into G5 Series Smart phone ports and G6 Series data port
- Control & Confirm LOCK, UNLOCK, START, STOP, TRUNK, & Aux Functions
- View the vehicle's current location
- Displays remote start remaining run time
- NEW run time extender feature!
- Shows door locked/unlocked status
- Displays vehicle voltage & Linkr network connection
- Direct plug-in to Excalibur 70 series remote starts
- Direct plug-in to OmegaLink RS kits
- Alarm trigger alert
- Install as stand alone tracker (Only GPS instant locate & alarm alert is available)
- Supports iDataLink, Posse, Fortin, & DBI/Smartstart protocols
- Includes the 1st year of service (\$39 USD for the following year)
- Works in the USA, Puerto Rico, and roams in Canada

IMPROVED 2-WAY LCD CONTROLLER



G5 SERIES UPGRADE

MODEL: **2WAY-UPGRADE**

2 WHY

FEATURES

- (1) 2-way LCD paging 5 button rechargeable remote
- (1) Companion non-paging 5 button remote
- Includes 2-way antenna
- Upgrade any G5 Series remote start system
- Up to 3000 ft of range
- For use with RS4-G5, RS3-G5, RS1-G5, RS00-G5, and SP-402 Systems

HEATED SEAT KIT

MODEL: **HSK-150**

!

FEATURES

- Carbon fiber elements
- Pads can be trimmed for custom fit
- Works with cloth or leather seats
- Dual temperature control (High/Low)
- Illuminated dual color LED switch
- Comes with back and bottom elements



iDataLink
REMOTE START/INTEGRATION MODULE

CRIMESTOPPER P/N: **OFA-30 (ADS-ALCA)**
OMEGA LIKE ITEM P/N: **OL-MIB-ALL**

- FEATURES**
- Remote start (low current only)
 - Integration module for thousands of vehicles
 - OEM T-harnesses available OEM or RF kit remote controllable
 - Works with over 10,000 vehicles
 - Convenience features and transponder in one module
 - Updateable via OFA-123 or OL-LOADER updater cable
 - Includes OL-ADS-DATA-CABLE



iDataLink
FIRMWARE UPDATER CABLE

CRIMESTOPPER P/N: **OFA-123**
OMEGA LIKE ITEM P/N: **OL-LOADER**

- FEATURES**
- Connects OFA and Omegalink integration modules to the computer
 - Must have to update and change features and update firmwares



MINIATURE HIGH OUTPUT 6-TONE SIREN

- MODEL: **AU-73M**
- FEATURES**
- Compact design for quick/easy install
 - Operates on 12v
 - Compatible with all alarm models



iDataLink
TRANSPONDER MODULE

CRIMESTOPPER P/N: **OFA-10 (ADS-TB)**
OMEGA LIKE ITEM P/N: **OL-MIB-KO**

- FEATURES**
- Transponder bypass module
 - Works with over 4000 vehicles
 - Updateable via OFA-123 or OL-LOADER updater cable

MODEL: **OL-ADS-DATA-CABLE**

- FEATURES**
- Data cable to match an OMEGALINK modules with Crimestopper unit



ONLY FOR USE WITH G6 SERIES

DUAL ZONE DATA SHOCK SENSOR

MODEL: **AU-84TDPB**

- FEATURES**
- Upgrade any 70 series model with black data port (RS-X70 & AL-XX70-B)
 - Uses iDataLink protocol
 - Pre-warn & trigger zones
 - Separate adjustment for each zone
 - Analog door trigger input (when not supported through data module)
 - Pass through data port for other plug-in accessories
 - Includes CS-SENSOR-LINK adapter
 - Compatible with G6 remote start and all "SP" security systems



DUAL ZONE PROXIMITY/MOTION SENSOR

MODEL: **AU-94TM**

- FEATURES**
- Pre-warn & trigger zones
 - Separate adjustment for each zone
 - Add to any Omega alarm w/ analog sensor ports
 - Ideal for soft tops
 - Long harness included for optimal placement
 - Includes CS-SENSOR-LINK adapter
 - Compatible with "SP" security systems



DUAL ZONE DIGITAL TILT SENSOR

MODEL: **AU-46TD**

- FEATURES**
- Hi resolution 3D accelerometer
 - Pre-warn & trigger zones
 - Separate adjustment for each zone
 - Add to any Omega alarm w/ analog sensor ports
 - Great wheel/tire protection
 - Includes CS-SENSOR-LINK adapter
 - Compatible with "SP" security systems



DUAL ZONE SHOCK & GLASS BREAK SENSOR

MODEL: **AU-85Tn**

- FEATURES**
- Magnetic resonance element for superior impact detection.
 - Pre-warn & trigger zones
 - Separate adjustment for each zone
 - Add to any Omega alarm w/ analog sensor ports.
 - Glass breakage detection microphone included for pinpoint accuracy
 - Includes CS-SENSOR-LINK adapter
 - Compatible with "SP" security systems



DUAL ZONE SHOCK SENSOR

MODEL: **AU-84Tn**

- FEATURES**
- Magnetic resonance element for superior impact detection.
 - Pre-warn & trigger zones
 - Separate adjustment for each zone
 - Add to any Omega alarm w/ analog sensor ports
 - Includes CS-SENSOR-LINK adapter
 - Compatible with "SP" security systems



OMEGA SENSOR ADAPTER

MODEL: **CS-SENSOR-LINK**

- FEATURES**
- Adapts any Omega sensor to all CrimeStopper "SP" models.
 - Included in all late production sensors
- Note: this adaptor is not compatible with SP-102**

ADAPT ANY OF THESE OMEGALINK T-HARNESSES TO WORK WITH CRIMESTOPPER REMOTE STARTERS & AN OL-MDB-ALL, ALCA, OR FLCAN INTERFACE MODULE.



OL-HRN-RS-CH4
OL-HRN-RS-CH5
OL-HRN-RS-CH7

CHRYSLER T-harnesses
Factory-fit installation T-harnesses for select Chrysler Group vehicles from 2005 and up, including standard key (CH5), TipStart (CH4), and Push-to-Start models (CH7).



OL-HRN-RS-FM2
OL-HRN-RS-FM3
OL-HRN-RS-FM8

FORD T-harnesses
Factory-fit installation T-harness for select Ford group vehicles from 2006 and up, including standard 40-bit and 80-bit keys (FM2,FM3), Ford/Lincoln models from 2013 and up, including standard key and push-to-start models (FM8).



OL-HRN-RS-GM7
OL-HRN-RS-GM10
OL-HRN-RS-GM12

GM T-harnesses
Factory-fit installation T-harness for select GM 'flip-key' and standard key models 2010 and up (GM7), GM 'SWC' full-size models 2006 and up (GM10). All GM7 vehicle plus GM 'flip-key' and standard key models 2017 and up (GM12)
OL-HRN-RS-GM12-ADAPT
Converts OL-HRN-RS-GM7 into GM12.



OL-HRN-RS-HA3
OL-HRN-RS-HA6
OL-HRN-RS-HA7

HONDA / ACURA T-harnesses
Factory-fit installation T-harness for select Honda/Acura standard key models from 2001 and up (HA2), Honda/Acura standard key models from 2008 and up (HA3), Honda/Acura PTS models 2013 and up (HA6), Honda/Acura PTS models 2014 and up (HA7). Honda PTS models 2016 and up (HA8).



OL-HRN-RS-HK

HYUNDAI/ KIA T-harness
Factory fit installation T-harness for select Hyundai/ Kia models from 2005 and up. Covers main ignition harness connections only since most US vehicles are not equipped with immobilizer.



OL-HRN-RS-TL5
OL-HRN-RS-TL7

TOYOTA / SCION T-harnesses
Factory-fit installation T-harness for select Toyota/ Scion standard key models from 2010 and up (TL5), Toyota/Lexus PTS models 2010 and up (TL7).



OL-HRN-RS-MA3

MAZDA T-harness
Factory-fit installation T-harness for select push-to-start Mazda models from 2013 and up (MA3).



OL-HRN-RS-NI3
OL-HRN-RS-NI4
OL-HRN-RS-NI5

NISSAN / INFINITI T-harnesses
Factory-fit installation T-harness for select Nissan/Infiniti push-to-start models 2013+ (NI3), Nissan/Infiniti standard key models 2004+ (NI4), Nissan/Infiniti push-to-start models 2007+ (NI5).

REQUIRED ACCESSORY HARNESSES ADAPTERS



ADAPTER HARNESSES
OL-HRN-RS-PWR
Use this to adapt any of the above harnesses to ANY remote start system using a OL-MDB-ALL, ALCA, or FLCAN interface module.

T-HARNESSES ADAPTOR
OL-HRN-PWR-CST
OmegaLink t-harness connects to Crimestopper Remote Starts



MODEL NUMBER	SP-102	SP-202	SP-302	SP-402	SP-502	RS00-G5	RS1-G5	RS3-G5	RS4-G5	RS7-G5
Range	500ft	700ft	3000ft	1500ft	3000ft	OEM	1500ft	1500ft	2000ft	3000ft
1-Way or 2-Way	1-Way	1-Way	2-Way	1-Way	2-Way	OEM	1-Way	1-Way	1-Way	2-Way
Remote Start				•	•	•	•	•	•	•
Keyless Entry	•	•	•	•	•	OEM	Unlock Only	•	•	•
Trunk Release	•	•	•	•	•	OEM		•	•	•
Driver's Priority Unlock		•	•	•	•	OEM		•	•	•
Pulse Before Start				•	•	•	•	•	•	•
Pulse After Start				•	•	•	•	•	•	•
Security	•	•	•	•	•	OEM				
Siren	•	•	•	•	•					
Horn Honk	•	•	•	•	•	OEM	•	•	•	•
Multi-Vehicle Operation		•	•	•	•			•	•	•
Remote Panic	•	•	•	•	•	OEM		•	•	•
Shock Sensor	•	•	•	•	•					
Dome Light Supervision										
Additional Aux Outputs	1	1	1	3	3	1	1	1	1	1 / 4 Thru Data Module
Data Port (D2D)		•	•	•	•	•	•	•	•	•
Run Time				5,10,20, 30 Min.	5,10,20, 30 Min.	5,10,20, 30 Min.	5,10,20, 30 Min.	5,10,20, 30 Min.	5,10,20, 30 Min.	5,10,20, 30 Min.
Pit Stop Mode				•	•	•	•	•	•	•
Timed Self Start				•	•	•	•	•	•	•
Tach, Tachless, Hybrid				•	•	•	•	•	•	•
Turbo Timer				•	•	•	•	•	•	•
Gas, Diesel, Hybrid				•	•	•	•	•	•	•
Programmable Selectable Output				•	•	•	•	•	•	•
Manual Transmission Mode				•	•	•	•	•	•	•
Passive Arming	•	•	•	•	•					
Starter Kill Output	•	•	•	•	•					
Silent Arm/Disarm	•	•	•	•	•					
Carjack Protection	•	•	•	•	•					
Telematics Port				•	•	•	•	•	•	•
Timed/Monitored				•	•	•	•	•	•	•

- Collision Avoidance
- Cameras
- Mirror Monitors
- DVR Systems



**NOW INCLUDES
LP-BRACKET!**

[CAM-300]

[CAM-400]



[CAM-300+]
SHOWN WITH MOUNT!

SAFETY

Crimestopper's decades of industry knowledge has given us the ability to offer some of the latest and greatest safety features that every vehicle should have. From backup cameras to blind spot detection, Crimestopper has you covered. With the largest assortment of parking assist, vehicle specific cameras and OEM style rear view mirror monitors, you can be sure that Crimestopper has what you need to keep you safe while in your vehicle.



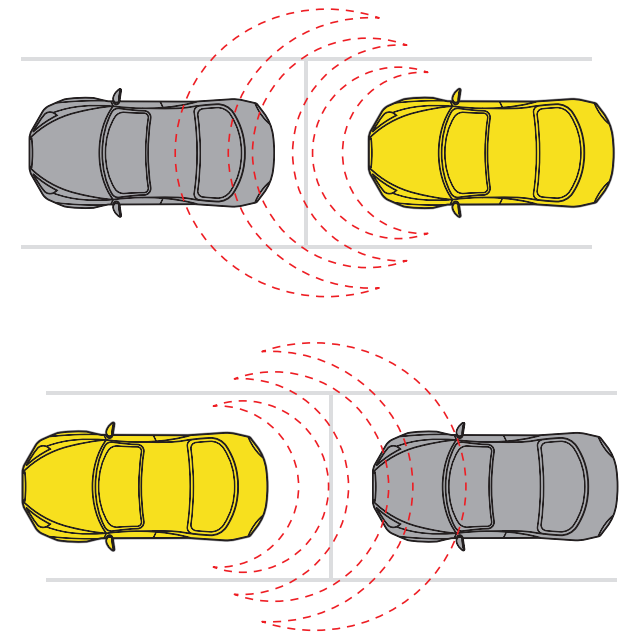
PREMIUM COLLISION AVOIDANCE SYSTEMS

MODEL: **PARK-PMCU** (replaced CA-5013-25)

FEATURES

- Best in class performance
- Trucks/SUV's and Car's
- Smallest front/rear sensors on the market
- First selectable front or rear system on the market
- One-piece sensors for easy painting
- Audible alert included (optional for most)
- Extra long 4.5M sensor leads included
- Painting mask with light and dark rings included

FRONT + REAR ASSIST



SAFETY

SUGGESTED ACCESSORIES

NEW!



MODEL: **PMCU-BOOT**

FEATURES

- 4 silicone sleeves for PMCU transducer for use with metal bumpers

NEW!



MODEL: **PMCU-MOUNT**

FEATURES

- Under bumper mount for PMCU transducer

WORKS WITH PARK-PMCU!



ADD-ON LED DISPLAY

MODEL: **PARK-LED**

FEATURES

- Includes audible alert
- Works with PARK-PMCU
- Distance shown on display



WORKS WITH PARK-PMCU!



PREMIUM ADD-ON LED DISPLAY

MODEL: **PARK-LED1**

FEATURES

- Front or Rear display (designed for rear)
- Works with PARK-PMCU
- Audible alerts
- Mountable for headliners (screws and adhesive)
- Paintable



WORKS WITH PARK-PMCU!



PREMIUM ADD-ON LED DISPLAY

MODEL: **PARK-LED2**

FEATURES

- Front or Rear display (designed for front)
- Works with PARK-PMCU
- Audible alerts with voice alerts
- Adhesive mountable only



BLIND SPOT SYSTEM

MODEL: **BSD-754**

FEATURES

- Small
- Easy to install
- OEM like
- Profitable
- Durable



BLIND SPOT SYSTEM

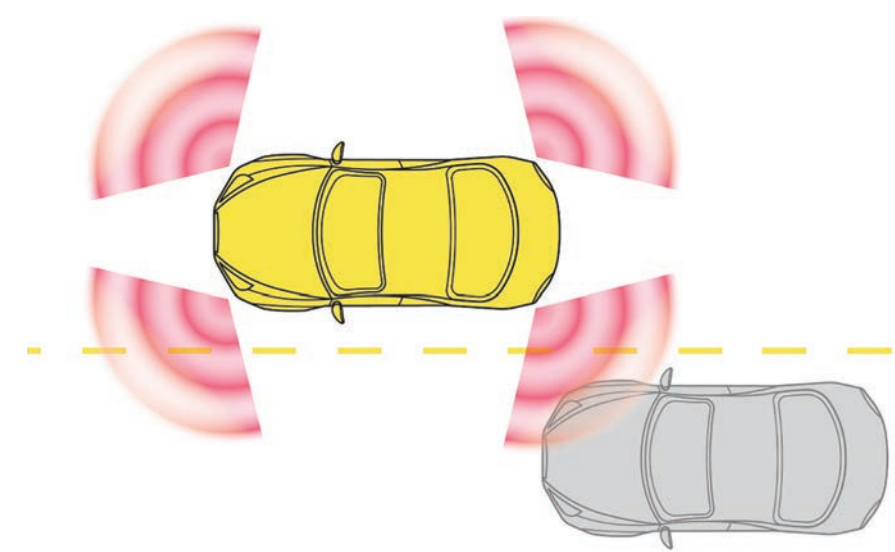
MODEL: **BSD-200**

FEATURES

- Best in class performance
- Smallest microwave sensors on the market
- Superior Anti-falsing technology
- Dual LED's included (oem flush and surface)
- Audible alert included (optional for most)
- Multiple angle adapters included with kit
- Key difference is our sensor mounts to the bracket



BLIND SPOT DETECTION



SAFETY
CAMERAS



4 IN 1 CAMERA

MODEL: **CAM-300+**

FEATURES

- IP67 marine grade water resistance
- Front or Rear facing image
- With or without parking lines
- 5 PLUS mounting options included
- 170 degree viewing angle
- Ultra low lux (.3 lux) – no IR needed
- Selectable parking lines (on and off)
- Modular harness for easy upgrade between cameras



4 IN 1 CAMERA

MODEL: **CAM-300**

FEATURES

- IP67 marine grade water resistance
- Front or Rear facing image
- With or without parking lines
- 5 PLUS mounting options included
- 160 degree viewing angle
- Ultra low lux (.3 lux) – no IR needed
- Selectable parking lines (on and off)
- Modular harness for easy upgrade between cameras

**Serial numbered*

Replaces – 6922/6819/6822/6940/5340/5130/6818 6820/6825/6925/6940/6826/6703/6706.IR



4 IN 1 HD CAMERA

MODEL: **CAM-400**

FEATURES

- HD CAMERA
- IP67 marine grade water resistance
- Front or Rear facing image
- With or without parking lines
- 5 PLUS mounting options included
- 170 degree viewing angle
- Ultra low lux (.3 lux) – no IR needed
- Selectable parking lines (on and off)
- Modular harness for easy upgrade between cameras

**Serial numbered*

Replaces – 6922/6819/6822/6940/5340/5130/6818 6820/6825/6925/6940/6826/6703/6706.IR/5150



**Mounting Options Are Included
CAM-300 / CAM-300+ / CAM-400**



LICENSE PLATE CAMERA BRACKET

MODEL: **LP-BRACKET**

FEATURES

- Works with CAM-300, CAM-300+, and CAM-400
- Mounts behind license plate
- Compatible with SXS off-road vehicles
- Breakaway tabs for universal fit



UNIVERSAL REAR VIEW BACKUP CAMERA

MODEL: **CAM-BARMNT**

FEATURES

- Works with CAM-300, CAM-300+, and CAM-400
- 170 Degree viewing angle
- Hidden mount
- Mounts behind license plate
- Selectable parking lines
- Waterproof design
- Selectable forward or reverse-facing image

**All Models Work With:
CAM-300
CAM-300+
CAM-400**



LICENSE PLATE FRAME CAMERA BRACKET

MODEL: **LP-FRAME-CHR**

FEATURES

- Works with CAM-300, CAM-300+, and CAM-400
- Full frame around your license plate
- High shine chrome metal finish
- Hidden wiring



LICENSE PLATE FRAME CAMERA BRACKET

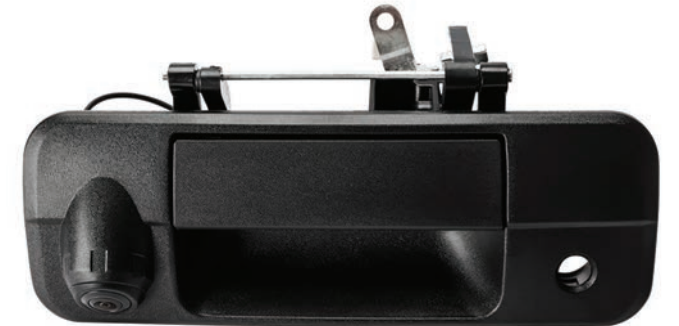
MODEL: **LP-FRAME-BLK**

FEATURES

- Works with CAM-300, CAM-300+, and CAM-400
- Full frame around your license plate
- Powder coated metal
- Hidden wiring

SAFETY
BRACKETS

LICENSE PLATE FRAMES



TAILGATE HANDLE CAMERA

MODEL: **TGH-F150-15**

FEATURES

- Fits 2015+ Ford F-150 trucks
- Works with CAM-300, CAM-300+, and CAM-400
- Made from high-quality ABS
- Replaces OEM tailgate handle
- Paintable

TAILGATE HANDLE CAMERA

MODEL: **TGH-CHEV-14**

FEATURES

- Fits 2014+ Chevy/GMC full sized trucks*
- Works with CAM-300, CAM-300+, and CAM-400
- Made from high-quality ABS
- Replaces OEM tailgate handle
- Paintable
- **Manual locking handles only*

TAILGATE HANDLE CAMERA

MODEL: **SV-6834.CHR**

FEATURES

- Fits 2010-2014 Ram Trucks
- 170° viewing angle
- Handle, linkage and camera all in one for direct swap
- Selectable parking assist lines
- Made from high-quality plastic
- Replaces OEM tailgate handle
- Waterproof

TAILGATE HANDLE CAMERA

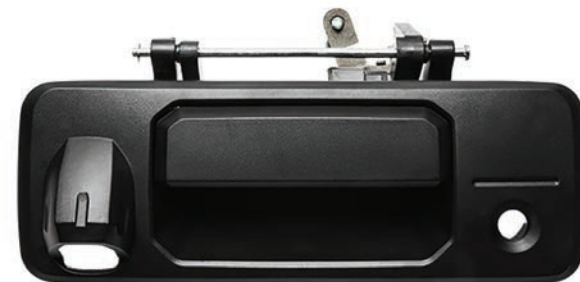
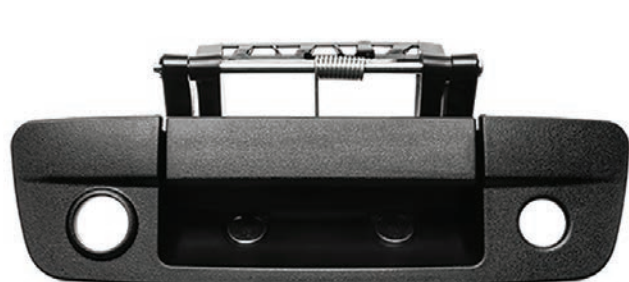
MODEL: **SV-6836.TOY**

FEATURES

- Fits 2007-2013 Toyota Tundra Trucks
- 170° viewing angle
- Handle, linkage and camera all in one for direct swap
- Selectable parking assist lines
- Made from high-quality plastic
- Replaces OEM tailgate handle
- Waterproof

Works with CAM-300, CAM-300+, and CAM-400!

Works with CAM-300, CAM-300+, and CAM-400!



TAILGATE HANDLE CAMERA

MODEL: **TGH-RAM-09**

FEATURES

- 2009+ RAM Tailgate Handle
- Works with CAM-300, CAM-300+, and CAM-400
- Made from high-quality ABS
- Replaces OEM tailgate handle
- Paintable

TAILGATE HANDLE CAMERA

MODEL: **TGH-TOY-16**

FEATURES

- Fits 2016+ Toyota trucks
- Works with CAM-300, CAM-300+, and CAM-400
- Made from high-quality ABS
- Replaces OEM tailgate handle
- Paintable

TAILGATE HANDLE CAMERA

MODEL: **SV-6832.CHEV**

FEATURES

- Fits 2007-2013 Chevy/GMC full size trucks
- 170° viewing angle
- Handle, linkage and camera all in one for direct swap
- Selectable parking assist lines
- Made from high-quality plastic
- Replaces OEM tailgate handle
- Waterproof

TAILGATE HANDLE CAMERA

MODEL: **SV-6836.TAC**

FEATURES

- Fits 2005-2015 Toyota Tacoma Trucks
- 170° viewing angle
- Handle, linkage and camera all in one for direct swap
- Selectable parking assist lines
- Made from high-quality plastic
- Replaces OEM tailgate handle
- Waterproof



REAR VIEW MIRROR MONITOR SYSTEM

MODEL: **MIR-045** (replaced 9153/9156/80% of the biz)

- FEATURES**
- 4.5" video screen
 - Dual video inputs – *Toy monitor
 - NO reverse trigger needed – video sensing
 - Replaces 9153 and 9156

Accessories:
MIR-BRKT-45: Master pack of 8 mounting brackets

REAR VIEW MIRROR MONITOR

MODEL: **MIR-ACT**

- FEATURES**
- OEM AUTO DIMMING
 - Built in Compass and Temperature sensors
 - Dual video inputs - Toy hauler monitor
 - 4.3" video screen
 - EXPEDITER / CAR DEALER focused

Accessories:
MIR-BRKT-437: Master pack of 8 mounting brackets

REAR VIEW DVR MIRROR MONITOR

MODEL: **MIR-DVR**

- FEATURES**
- DUAL DVR w/Front facing cam
 - View and record Toy hauler with CAM300
 - 4.3" video screen
 - Handles 32GB card (16GB card included)

Accessories:
MIR-BRKT-437: Master pack of 8 mounting brackets



REAR VIEW MIRROR MONITOR

MODEL: **MIR-007**

- FEATURES**
- Best in class performance and price point
 - 7" video or DUAL 3.5" video screen
 - 3 video inputs with built in switcher
 - Touch screen
 - * Toy hauler monitor
 - VIDEO BLINDSPOT BUILT IN!

Accessories:
MIR-BRKT-437: Master pack of 8 mounting brackets



REAR VIEW MIRROR MONITOR

MODEL: **MIR-APL**

- FEATURES**
- Rear view mirror 4.3" LCD monitor
 - Parking lines move when vehicle turns
 - Dual video inputs

COMMERCIAL & RECREATIONAL

CrimeStopper has expanded its product offering to have an option for virtually every vehicle, including equipment for commercial and recreational vehicles. Our lineup offers heavy duty and vehicle specific cameras, wireless systems, large monitors with multiple viewing options and even heavy duty DVRs. If you work on or in a commercial vehicle or are hitting the road in your RV, we have the product for you.



FORD TRANSIT CONNECT LICENSE PLATE LIGHT CAMERA

MODEL: **OEM-6400.FT**

FEATURES

- 2010-2012 Ford Transit
- Connect
- Replaces OEM license plate light
- 170 degree viewing angle
- Selectable parking assist lines
- Constructed from high grade plastic
- Waterproof design



COMMERCIAL CAMERA

MODEL: **COM-CAM1**

FEATURES

- 170° viewing angle
- Built-in microphone
- IP67 marine rated
- Selectable parking lines
- Front or rear mounting options
- Includes both standard RCA and 4 pin commercial harness
- Includes photo cell



CHEVY/GMC 3RD BRAKE LIGHT CAMERA

MODEL: **SV-6901.EXP**

FEATURES

- Fits the 2009-2013 Chevy/GMC Express/Savana Van's
- 170° Viewing angle
- Replaces the OEM 3rd brake light
- Selectable parking assist lines
- Constructed from high-grade plastic
- Infrared LED's for night vision



RAM CLEARANCE/MARKER LIGHT CAMERA

MODEL: **SV-6904.PRO**

FEATURES

- 2013+ RAM Promaster
- Replaces OEM Clearance/marker light
- 170 degree viewing angle
- Selectable parking assist lines
- Utilizes OEM light housing and light
- Retains OEM look
- Constructed from high grade plastic
- Waterproof design



7" LCD HD COLOR QUAD MONITOR

MODEL: **SV-8900.QM.II**

FEATURES

- View 1-4 images at once
- 7" LCD HD monitor
- Auto-switching on reverse input
- Built in speaker
- Monitor can output voltage to cameras
- 4 inputs

Cameras sold separately



COMMERCIAL GRADE LCD MONITOR

MODEL: **SV-8700**

FEATURES

- 7" HD screen
- 3 video inputs
- 3 audio inputs
- Only view 1 image at a time
- Auto-switching on reverse input
- Monitor can supply camera power
- Detachable sun shade
- Built-on speaker
- Full functional remote



COMMERCIAL GRADE MONITOR WITH DUAL WIRELESS CAMERA

MODEL: **SV-2002.BRV**

FEATURES

- 7" LCD Monitor
- Video transmitted over 2.4GHz
- Eliminates running video cable
- Wired connections also accepted
- Cameras offer 130 degree viewing angle
- Infra-red LED's for night vision
- Will work up to 200 ft from monitor
- Waterproof (cameras only)



UNIVERSAL 4.3" LCD HD MONITOR

MODEL: **SV-8151.HD**

FEATURES

- 4.3" LCD HD display
- Tilting mounting bracket (UP or DOWN)
- (2) Video inputs
- Auto-switching on reverse input
- Mount on the windshield or dashboard
- Low profile, ultra-thin, compact design



VIDEO OVER POWER LINE SYSTEM

MODEL: **SV-1200.PLW**

FEATURES

- Video transmission over DC power circuits
- Eliminates installing lengthy video cable runs
- Simple power and ground hook up
- Perfect for large trucks, motor homes, buses and limousines
- Up to 200 ft. of range
- Waterproof Design



DVR SYSTEM

MODEL: **UBB-4CQ**

FEATURES

- Provides around-the-clock monitoring of the vehicle
- Up to (4) cameras can record while ignition is on
- Has 3 trigger inputs that can be connected to an alarm or other inputs
- Class 10 SD card required
- Standard or HD recording
- Wired microphone included
- Full-function remote included



INSTALLATION ACCESSORIES

When you are installing a CrimeStopper product, we want to make sure that you have ALL of the parts you will need to get your installation done right. We have products like t-harnesses for remote starts, wireless video transmitters and even extension cables to make your camera installation a breeze.



WIRELESS TRANSMITTER/RECEIVER

MODEL: VID-TRX



FEATURES

- Wirelessly transmit video
 - Simple installation
 - Over 650' (200 meters) of range
 - Works on a digital 2.4GHz Frequency
 - Works on 8-24 volt systems
- Compatible with all Crimestopper cameras and monitors*



MULTI-CAMERA SWITCHER

MODEL: VSMC-4000



FEATURES

- Multi-camera Capable
- Displays (4) Images On (1) Monitor simultaneously
- (4) Video Inputs, (1) Video Output
- Main Control Unit Powers All (4) Cameras
- Auto-switching On Reverse and Turn Signals
- Front Camera Can Be On When All Other Cameras Are Off
- Front Camera Can Also Be Used As Triggered Camera



COMMERCIAL GRADE VIDEO EXTENSION CABLE

MODEL: SV-20M.4PIN



FEATURES

- 20 Meters (65.6 ft.) in length
- 4 pin male to 4 pin female connections



www.**CrimeStopper**.com

CrimeStopper's corporate site & product information

Technical Support

800-921-TECH (8234)

tech@CrimeStopper.com

facebook.com/groups/crimestopper

Sales/Customer Service

800-554-4053 (toll free)

+1-770-942-9876 (outside USA)

1-800-921-TECH (8324) ■ www.crimestopper.com ■ 981 North Burnt Hickory Road ■ Douglasville, GA 30134
CrimeStopper and associated logos, where applicable, are registered trademarks of Omega Research & Development
in the United States and/or other countries. All other trademarks are the property of their respective owners.
Specifications subject to change without notice. © 2020 Copyright CrimeStopper All Rights Reserved